

## Parabolic antenna JRC-24 MIMO rev1

---

Dual-polarized parabolic antenna **JRC-24 MIMO revision 1** is designed for directional links with MIMO mode at the frequency band 5 GHz. The antenna is designed for environments with multiple reflections for medium distances or short distances in difficult conditions.

### Electrical parameters:

<b>Frequency range</b>	5.1 – 6.1 GHz
<b>Gain</b> 5.1 – 5.35 GHz	22.0 ± 0.6 dBi
<b>Gain</b> 5.47 – 6.1 GHz	23.6 ± 0.6 dBi
<b>VSWR</b> 5.2 – 6.0 GHz	≤ 1.5
<b>VSWR</b> REST OF FREQ. RANGE	≤ 1.8
<b>Beamwidth</b> -3 dB	9.0°
<b>Isolation between ports</b>	≥ 28 dB
<b>Front to Back ration</b>	≥ 32 dB
<b>Polarization</b>	Vertical / Horizontal or 45°/-45°

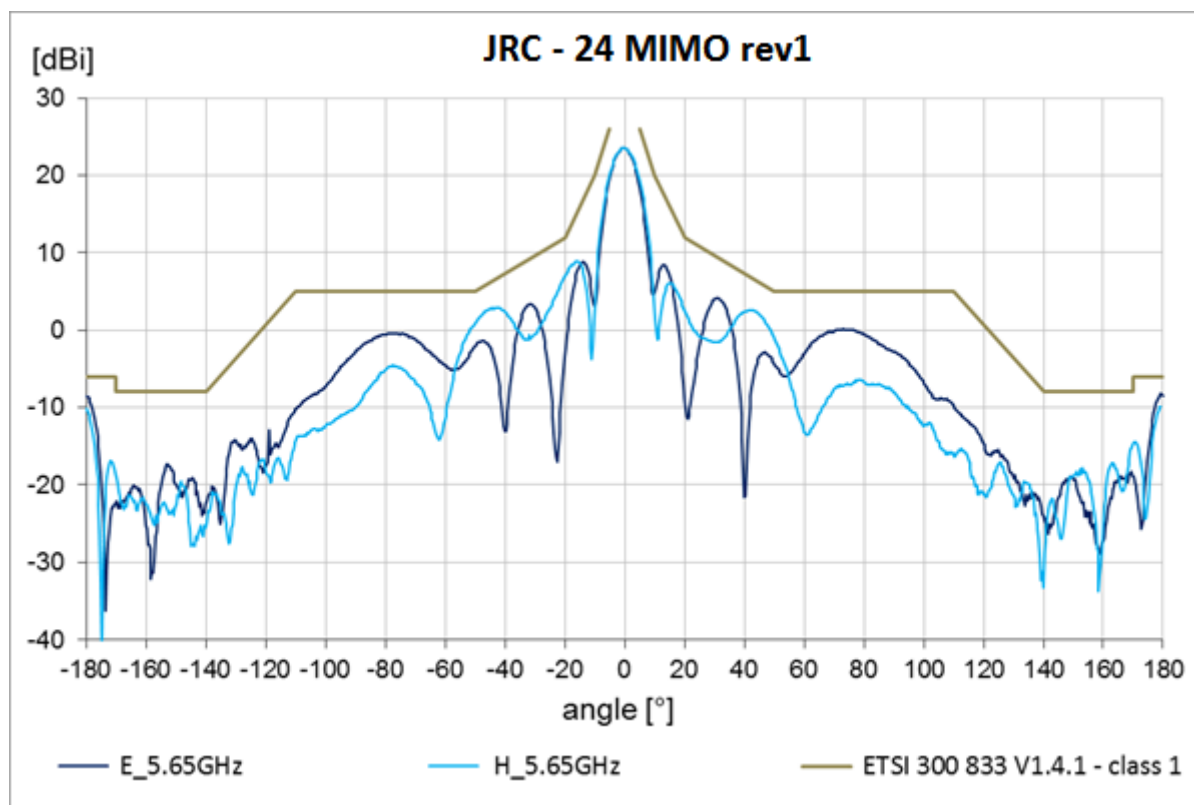
### Mechanical parameters:

<b>Parabola</b>	ø 380 mm, Aluminium alloy
<b>Cover</b>	UV steady plastic ABS
<b>Type of connector</b>	N-female, R-SMA
<b>Installation for mast</b>	Ø 27 - 74 mm
<b>Weight of antenna (1pcs)</b>	2.4 kg
<b>Shipping dimensions (2pcs)</b>	470 mm x 460 mm x 120 mm

The antenna can be used in combination with an outdoor box GentleBOX JR – 200 for AP, RouterBOARDS and other electronics or with bracket GentleCLIP for easy installation of Rocket M5 or other devices with the same clipped system. Mount the antenna has separate latching nuts for easy mounting and adjustment of the azimuth and elevation.

## Parabolic antenna JRC-24 MIMO rev1

### Measurement of radiation pattern:



## Parabolic antenna JRC-24 MIMO rev1

### Outline:



Fig. 1 Basic antenna design

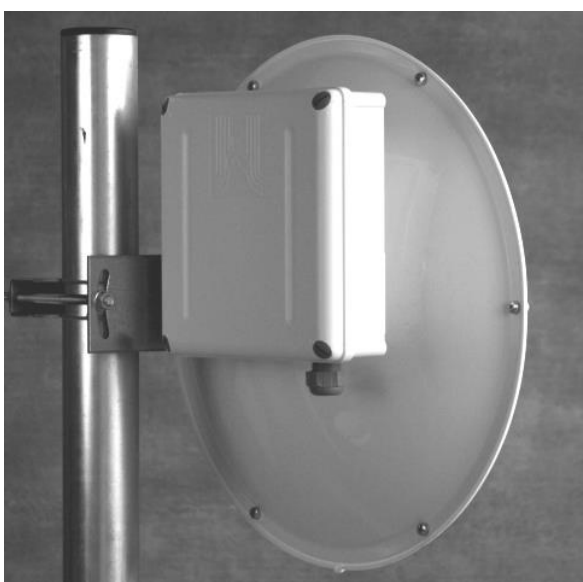


Fig. 2 Use of antenna with GentleBOX and GentleClip