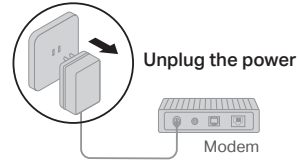


# 1 Connect the Hardware

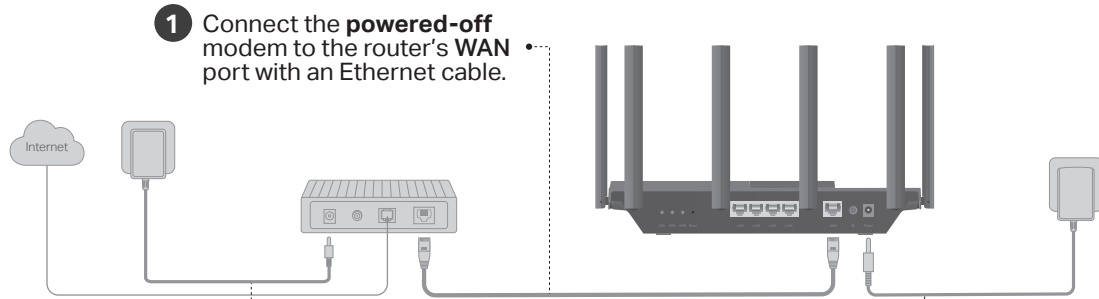


- **Unplug the power** to turn off your modem, if any, and remove the backup battery if it has one.
- Place the router horizontally and orient the antennas vertically.



If your internet comes from an Ethernet outlet instead of a DSL / Cable / Satellite modem, connect the router's **WAN** port to it, then follow steps 3 and 4 to complete the hardware connection.

\*Image may differ from actual product.



**1** Connect the **powered-off** modem to the router's **WAN** port with an Ethernet cable.

**2** Power on the modem, and then wait about **2 minutes** for it to restart.

**3** Connect the power adapter to the router and turn it on.

**4** Verify that the hardware connection is correct by checking the following LEDs.

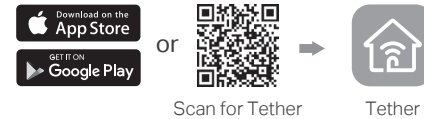


Note: If the 2.4 GHz LED and 5 GHz LED are off, press and hold the Wi-Fi button on the back for more than 2 seconds. Both the LEDs should turn solid on.

# 2 Set Up the Network

## Method ONE: Via TP-Link Tether App

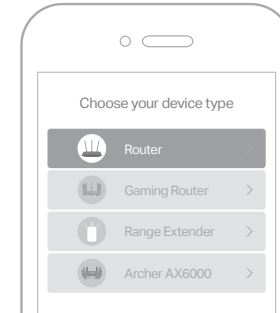
1. Download the Tether app.



2. Open the Tether app and log in with your TP-Link ID.

Note: If you don't have an account, create one first.

3. Tap the **+** button in the Tether app and select **Router > Wireless Router**. Follow the steps to complete the setup and connect to the internet.



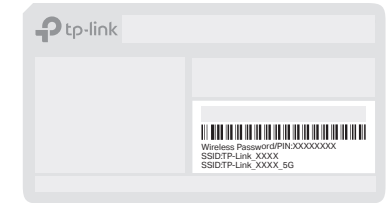
😊 Enjoy the internet !

To enjoy a more complete service from TP-Link, bind your TP-Link ID to the router.

## Method TWO: Via a Web Browser

1. Connect your device to the router wirelessly or with an Ethernet cable.

The default wireless network names (SSIDs) and password are printed on the label at the bottom of the router.



2. Launch a web browser, and enter <http://tplinkwifi.net> or <http://192.168.0.1> in the address bar. Create a password to log in.

Note: If the login window does not appear, please refer to **Q1 of Need Help?** in this guide.



3. Follow the step-by-step instructions to set up the internet connection and register for the TP-Link Cloud service.

😊 Enjoy the internet !

## Button Explanation

### LED Button

Press the button for 1 second to turn on or off the LEDs of your router.

### WPS Button

Press the button for 1 second, and immediately press the WPS button on your client to start the WPS process.

### Wi-Fi Button

Press and hold the button for more than 2 seconds to turn on or off the wireless function of your router.

### Reset Button

Press and hold the button for about 6 seconds until the Power LED blinks to reset the router to its factory default settings.

## USB Applications

With the USB port, it's easy to share files and media with multiple devices. Visit <https://www.tp-link.com/app/usb> to learn more about the USB applications.

### • Local Storage Sharing

Share files from the USB drive with devices on your home network

### • Media Server

Play media from the USB drive on your computer and smart devices

### • Remote Access

Access the USB drive when you are away from home



To communicate with TP-Link users or engineers, visit <https://community.tp-link.com> to join TP-Link Community.



For technical support, replacement services, user guides, and other information, please visit <https://www.tp-link.com/support>.



Email [techwriter@tp-link.com.cn](mailto:techwriter@tp-link.com.cn) to give suggestions.

- Keep the device away from water, fire, humidity or hot environments.
- Do not attempt to disassemble, repair, or modify the device. If you need service, please contact us.
- Do not use any other chargers than those recommended.
- Do not use damaged charger or USB cable to charge the device.
- Do not use the device where wireless devices are not allowed.
- Adapter shall be installed near the equipment and shall be easily accessible.

## Need Help?



### Q1. What should I do if I can't access the web management page?

- Reboot your router and try again.
- If the computer is set to a static IP, change its settings to obtain an IP address automatically.
- Verify that <http://tplinkwifi.net> is correctly entered in the web browser. Alternatively, enter <http://192.168.0.1> or <http://192.168.1.1> in the web browser.
- Use another web browser and try again.
- Disable and enable the network adapter in use.

### Q2. What should I do if I can't access the internet?

- Reboot your modem and router, then try again.
- Check if the internet is working normally by connecting a computer directly to the modem via an Ethernet cable. If it is not, contact your internet service provider.
- Log in to the web management page of the router, and go to the **Network Map** page to check whether the internet IP address is valid or not. If it is, go to **Advanced > Quick Setup** to set up again; otherwise, check the hardware connection.
- For cable modem users, log in to the web management page of the router and go to **Advanced > Network > Internet > MAC Clone**. Select **Clone Current Device MAC** and click **SAVE**. Then reboot both the modem and the router.

### Q3. What should I do if I forget my wireless password?

- If you have not changed the default wireless password, it can be found on the label at the bottom of the router.
- Connect a computer directly to the router using an Ethernet cable. Log in to the router's web management page at <http://tplinkwifi.net>, and go to the **Wireless** page to retrieve or reset your wireless password.

### Q4. What should I do if I forget my web management page password?

- If you are using a TP-Link ID to log in, click **Forgot password** on the login page and then follow the instructions to reset it.
- Alternatively, press and hold the **Reset** button on the back for about 6 seconds until the Power LED blinks. Then visit <http://tplinkwifi.net> to create a new login password.

©2020 TP-Link 7106508967 REV1.0.0

# Quick Installation Guide



AX5400 Wi-Fi 6 Router

