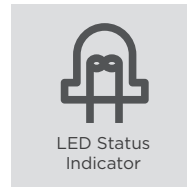
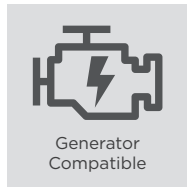
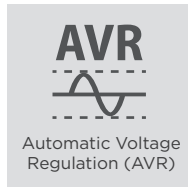
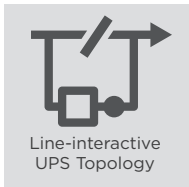




## GENERATOR-COMPATIBLE BRICK UPS



### The brick UPS compatible with generators to offer power protection

Ideal for home, SOHO office and office applications, the BU Series adopts line-interactive topology with Automatic Voltage Regulation (AVR) function to offer stabilized AC power output. The products are compatible with generators to prolong power continuity. The UPSs also feature overload protection and configurable alarm to safeguard your devices. The brick design with mounting slots allows users to place it easily on walls, desks or other tight spaces.

#### APPLICATION

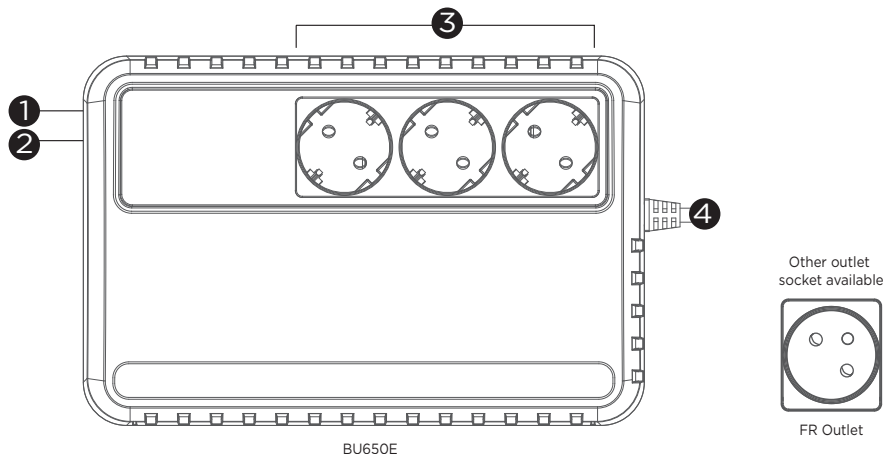
- Home
- Office
- SOHO Office

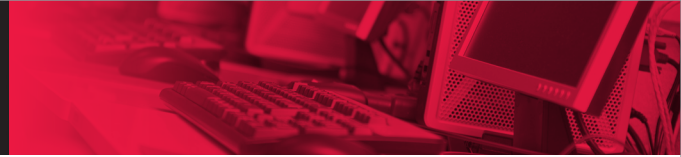
#### SERIES FEATURES

- Line-interactive UPS Topology
- Generator Compatible
- Overload Protection
- EMI and RFI Filtration
- Brick Form Factor
- Automatic Voltage Regulation (AVR)
- LED Status Indicator
- Surge and Spike Protection
- Configurable Alarm

#### PRODUCT CALLOUTS

1. Power On Indicator
2. Power On/Off Switch
3. Battery & Surge Protected Outlets
4. AC Input Power Cord





## TECHNICAL SPECIFICATIONS

Model Name	BU650E
<b>General</b>	
UPS Topology	Line-interactive
<b>Input</b>	
Generator Compatibility	Yes
Nominal Input Voltage (Vac)	230 ± 10%
Input Voltage Range (Vac)	165 - 280
Input Frequency (Hz)	50 ± 5, 60 ± 5
Input Frequency Detection	Auto-sensing
Rated Input Current (A)	2.95
Input Connector Type	Schuko
<b>Output</b>	
Capacity (VA)	650
Capacity (Watts)	360
On Battery Waveform	Simulated Sine Wave
On Battery Voltage(s) (Vac)	230 ± 10%
On Battery Frequency (Hz)	50 ± 1%, 60 ± 1%
Automatic Voltage Regulation (AVR)	Single Boost, Single Buck
Overload Protection	Fuse
Outlet(s) - Total	3
Outlet Type	Schuko x 3 or FR x 3
Outlet(s) - Battery & Surge Protected	3
Typical Transfer Time (ms)	4
<b>Battery</b>	
Runtime at 60W (min)	30
Runtime at 90W (min)	18
Typical Recharge Time (Hours)	8
User Replaceable	No
Battery Type	Sealed Lead-acid
<b>Surge Protection &amp; Filtering</b>	
Surge Suppression (Joules)	125
EMI/RFI Filtration	Yes
<b>Management &amp; Communications</b>	
LED Indicators	Power On, Line Mode, Battery Mode, Low Battery
Audible Alarms	Battery Mode, Low Battery, Overload, UPS Fault
<b>Physical</b>	
Form Factor	Brick with Wall Mountable Capability
<b>Physical Size - UPS Module</b>	
Dimensions (WxHxD) (mm.)	158 x 91.5 x 240
Weight (kg.)	3.8
<b>Environmental</b>	
Operating Temperature (°C)	0 - 40
Operating Relative Humidity (Non-condensing) (%)	0 - 90
Online Thermal Dissipation (BTU/hr)	40
<b>Certifications</b>	
Certifications*	CE
RoHS	Yes

\*Certifications may vary according to different regions. Visit [www.cyberpower.com](http://www.cyberpower.com) for more information.  
#All specifications are subject to change without notice.