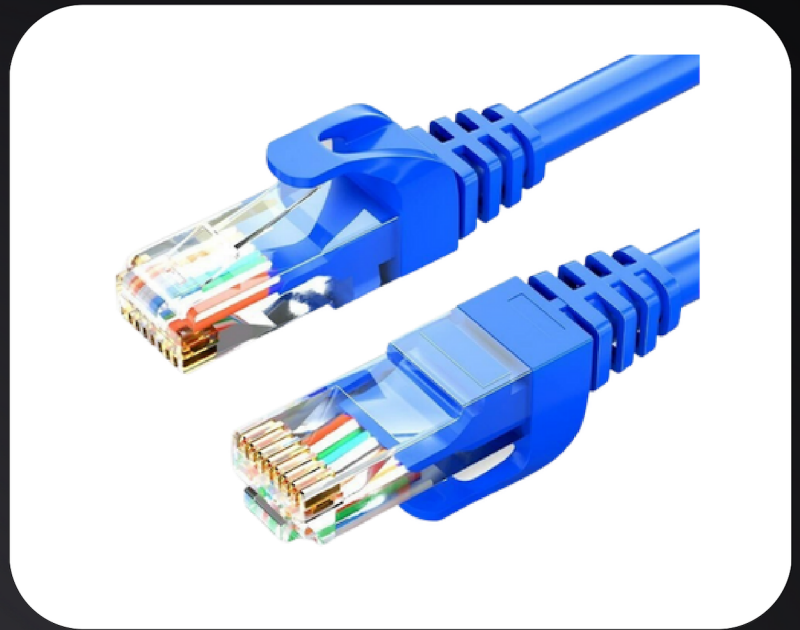


CAT5E UTP

DATAWAY unshielded Category 5E patch cords are very flexible and reliable products that are produced using an AWG 26 double shielded patch cable. Similarly to other DATAWAY patch cords, the unshielded Category 5E patch cables are available in various lengths and colours with PVC jacket.



Plug Type - RJ45, 8p8c

Life Cycle - 1,000 cycles

Contact Material - 50 µin gold

Conductor Size and Type - Copper 7 x 0,16 mm ± 0,008 mm, AWG 26

Sheath - PVC

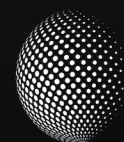
Colour - Grey, Green, Blue, Red, Yellow

Storage Temperature - -40 to +70 °C

Operation Temperature - -10 to +60 °C

Max. Humidity Operation - 93 %

LENGHT	GRAY	YELLOW	BLUE	RED	GREEN
0,25m	DW-U5E-0025-GR	DW-U5E-0025-YL	DW-U5E-0025-BL	DW-U5E-0025-RD	DW-U5E-0025-GN
0,50m	DW-U5E-005-GR	DW-U5E-005-YL	DW-U5E-005-BL	DW-U5E-005-RD	DW-U5E-005-GN
1m	DW-U5E-010-GR	DW-U5E-010-YL	DW-U5E-010-BL	DW-U5E-010-RD	DW-U5E-010-GN
2m	DW-U5E-020-GR	DW-U5E-020-YL	DW-U5E-020-BL	DW-U5E-020-RD	DW-U5E-020-GN
3m	DW-U5E-030-GR	DW-U5E-030-YL	DW-U5E-030-BL	DW-U5E-030-RD	DW-U5E-030-GN
5m	DW-U5E-050-GR	DW-U5E-050-YL	DW-U5E-050-BL	DW-U5E-050-RD	DW-U5E-050-GN
7m	DW-U5E-070-GR	DW-U5E-070-YL	DW-U5E-070-BL	DW-U5E-070-RD	DW-U5E-070-GN
10m	DW-U5E-100-GR	DW-U5E-100-YL	DW-U5E-100-BL	DW-U5E-100-RD	DW-U5E-100-GN
15m	DW-U5E-150-GR	DW-U5E-150-YL	DW-U5E-150-BL	DW-U5E-150-RD	DW-U5E-150-GN
20m	DW-U5E-200-GR	DW-U5E-200-YL	DW-U5E-200-BL	DW-U5E-200-RD	DW-U5E-200-GN



DATAWAY