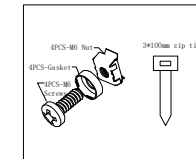
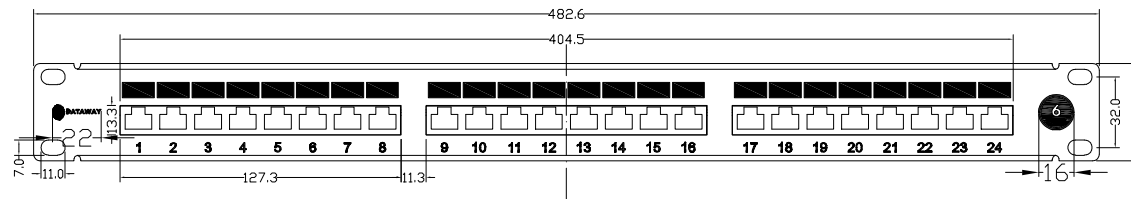
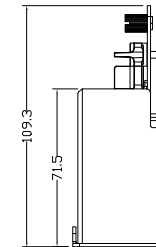
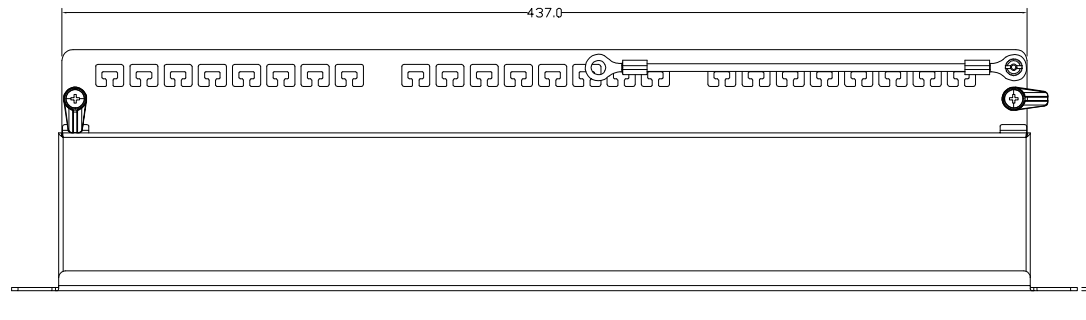
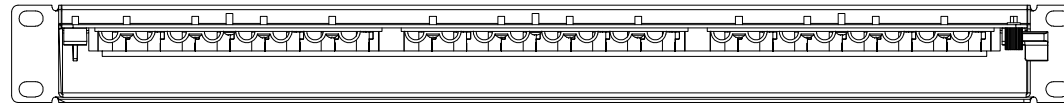




Product NO.		RHT-620-4512		
ISSUE	DESCRIPTION	DWN	DATE	APPROVEN
R1.0	First issue	Gavin	2023/11/13	JIM.KING



Drawing scale: 1:10

24-port Cat6 shielded patch panel, Krone terminals (dual-purpose) 1U 19", black, with 4 sets of M6 zinc-plated screws, nuts and spacers + 24 x 3\*100mm cable ties, logo printed from left to right (white and yellow) + white 1-24 (with white grid)

-TOLERANCES- UNLESS OTHERWISE SPECIFIED			PART DESCRIPTION: 19" Patch Panel DATAWAY CAT6 STP 24x RJ45 Black 1U, M6 set			
		Appr: JIM.KING	P/N: DW-PP-6-STP-24-BK			
UNLESS OTHERWISE SPECIFIED: TOLERANCES FOR MILLIMETERS ARE:	Check:	Date	Scale	Unit	Type	Page
0.5 - 8mm ± 0.20mm 8 - 30mm ± 0.25mm 30 - 120mm ± 0.30mm	Draw: Gavin	2023.11.13	Free	MM	Z	1/1