



AGM-12-75

Valve-regulated lead-acid battery



GENERAL PURPOSE SERIES

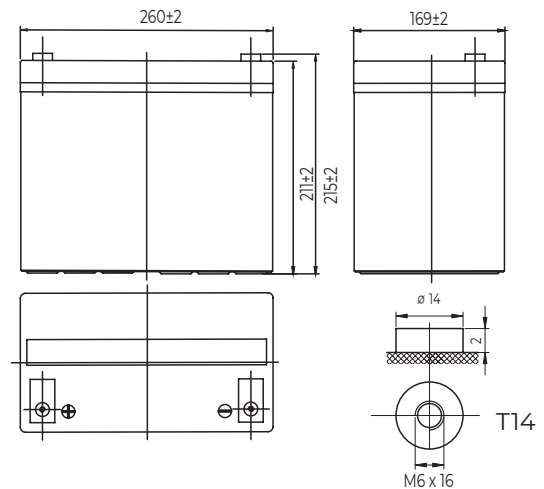
Characteristics

Nominal voltage	12V (6 cells per unit)	
Nominal capacity at 10 hours rate/10.8V (25°C)	75Ah	
Capacity (25°C)	20 Hours rate/10.8V	79.6Ah
	5 Hours rate/10.8V	64Ah
Terminal type	T14	
Torque	5.1±0.6N.m	
Approx. internal resistance (25°C)	6.0mΩ	
Dimensions	Length	260±2mm (10.24inch)
	Width	169±2mm (6.61inch)
	Height	211±2mm (8.31inch)
	Total height (T14)	215±2mm (8.46inch)
Design Life (stand-by)	JIS at 25°C	10 years
	Eurobat at 20°C	10/12 years
Weight	23.50kg (53.30lbs)±3%	
Nominal operating temperature	25°C±3 (77±5°F)	
Operating temperature range	Discharge	-15°C~50°C (5°F~122°F)
	Charge	-10°C~50°C (14°F~122°F)
	Storage	-20°C~50°C (-4°F~122°F)
Float charging voltage at 25°C	13.5V~13.8V	
Cyclic charging voltage at 25°C	14.5V~15.0V	
Temperature compensation	Float charge	-18 mV/°C/Block
	Cycle charge	-30 mV/°C/Block
Max. charging current (A)	22.5A	
Max. discharge current for 5 seconds	700A	
Self discharge rate (25°C)	≤3%/month	
Battery container ABS UL94-HB	V-0 optional	

Overview

General Purpose series batteries are de-signed with state-of-the-art AGM (absorbent glass mat) technology, high-performance plates and electrolyte. With excellent value and characteristics, this range is suitable for all general purpose applications.

Dimensions & Terminal Type (mm)



Construction

Component	Positive Plate	Negative plate	Container	Separator	Electrolyte	Safety valve	Terminal
Raw material	Lead dioxide	Lead	ABS (V-0 opt.)	AGM	Sulfuric Acid	Rubber	Copper

Constant current discharge characteristics at 25°C

(Ampere/battery)

F.V/Time	10min	15min	30min	60min	2h	3h	4h	5h	8h	10h	20h
9.60V	164	126	75.4	46.4	27.4	19.7	15.8	13.5	9.26	7.64	4.05
9.90V	159	123	73.9	45.7	27.2	19.6	15.7	13.4	9.20	7.62	4.04
10.2V	152	118	71.6	44.5	27.0	19.5	15.6	13.3	9.14	7.60	4.03
10.5V	146	114	69.9	43.1	26.6	19.4	15.5	13.2	9.08	7.55	4.00
10.8V	137	108	67.3	41.7	25.9	18.8	15.0	12.8	8.80	7.50	3.98

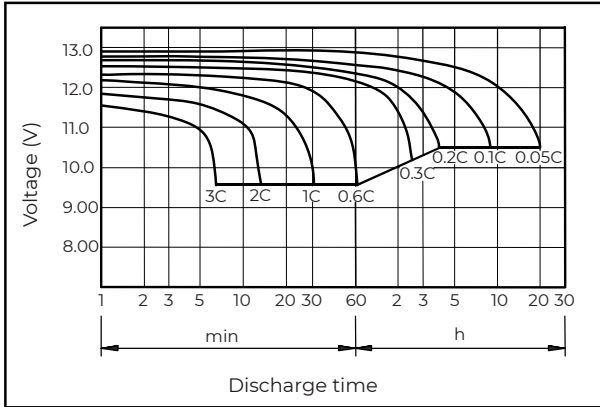
Constant power discharge characteristics at 25°C

(Watts/battery)

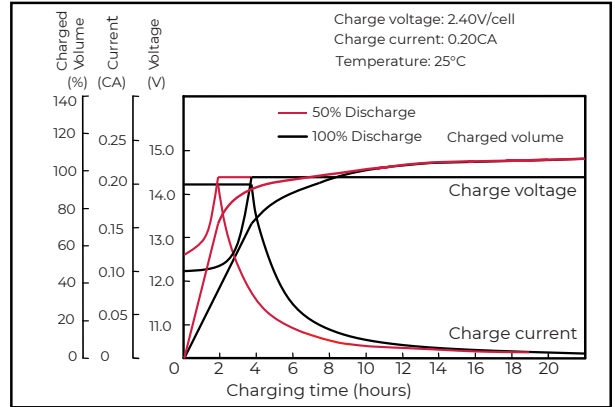
F.V/Time	10min	15min	30min	60min	2h	3h	4h	5h	8h	10h	20h
9.60V	1766	1383	846	528	317	232	185	159	110	91.2	48.6
9.90V	1713	1350	829	520	315	231	184	158	109	91.0	48.5
10.2V	1642	1300	803	507	313	229	183	157	109	90.7	48.3
10.5V	1572	1256	784	491	308	228	182	156	108	90.2	48.0
10.8V	1483	1190	755	476	300	221	176	151	105	89.6	47.7

The above characteristics represent average values and can be obtained within three charge and discharge cycles. The batteries must be fully charged before testing. The data in this document is subject to change without notice and become contractual only after written confirmation. Please contact Conexpro for the latest available version.

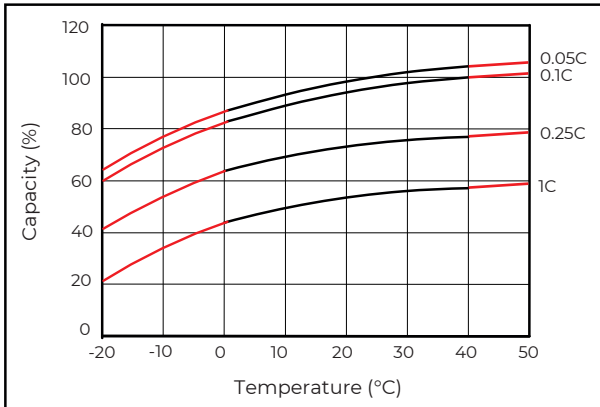
Discharge characteristics (25°C)



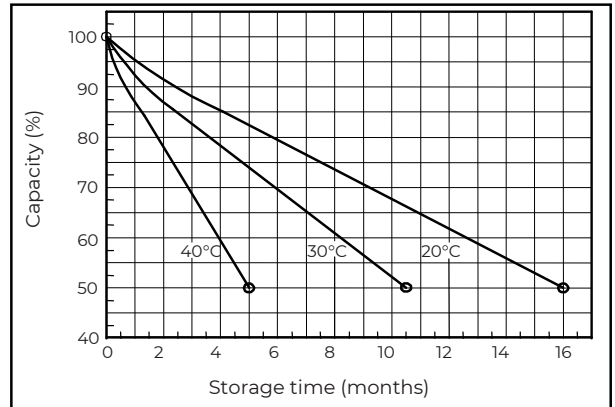
Charging characteristics (25°C)



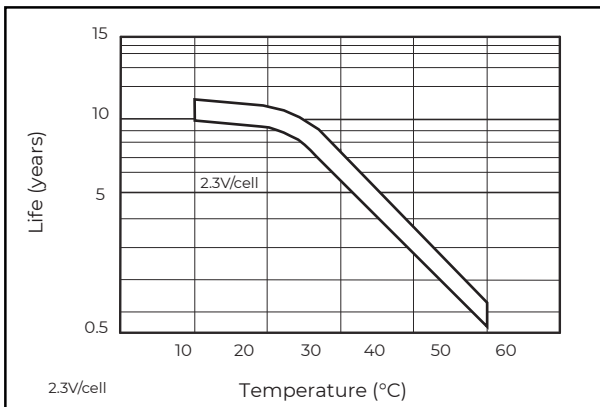
Temperature effects on capacity



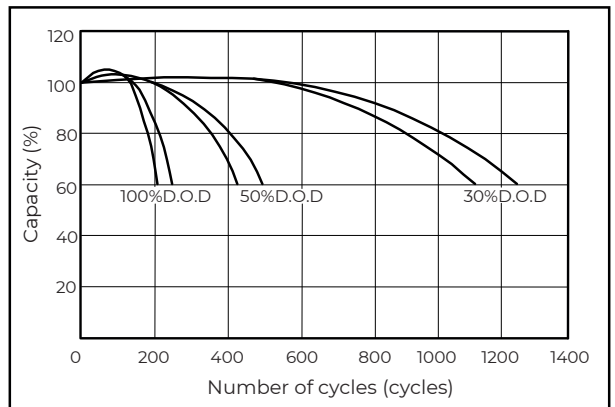
Self-discharge characteristics



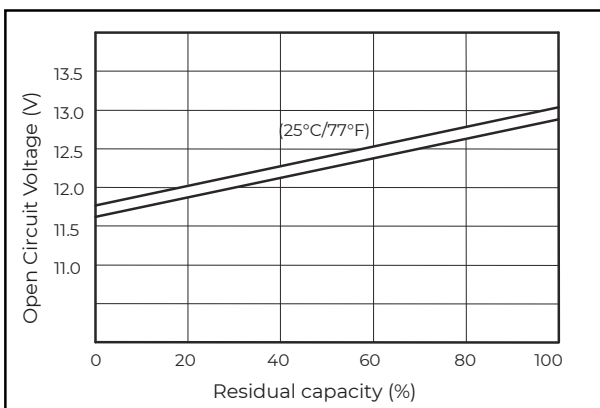
Floating life on temperature



Cycle life on D.O.D (25°C)



Relationship for OCV and capacity (25°C)



Charging voltage VS temperature

