

Title:

Installing instruction customer outlet VFTO-E1 with preconnectorized abonent cable in the Rapid Box carton.

INSTALLING INSTRUCTION OF CUSTOMER OUTLET VFTO-E1 WITH PRECONNECTORIZED ABONENT CABLE IN THE RAPID BOX CARTON.



Title:

Installing instruction customer outlet VFTO-E1 with preconnectorized abonent cable in the Rapid Box carton.

Content

| | |
|---|-------|
| 1. Description. | p. 2 |
| 2. General information. | p. 3 |
| 3. Installation guidelines. | p. 4 |
| 4. Methods of unwinder the cable with of carton Rapid Box | p. 7 |
| 5. Installing customer outlet VFTO-E1. | p. 11 |
| 6. Notes. | p. 14 |

1. Description.

VFTO-E1 customer outlet is specifically designed for FTTH networks as a termination point of an optical duct for max. 4 optical fibers in various home and business networks. ARB-E1-xx option is the customer outlet VFTO-E1 with preconnectorized abonent cable wounded on the cardboard drum with installed adapters, which meet customer requirements. All set is in the outer carton box, thus product is protected during transport and storage. Therefore, the kit guarantees easy and safe installation. A special unwider system of cables guarantees safe measuring of length and guarantees correct unwinding of the cable (without any tangle). There are many types of abonents cables available, a wide range of adapters and fiber optic connectors terminated on the cable that ensure the best choice of customer outlet fittings, which meets customer needs.

Title:
Installing instruction customer outlet VFTO-E1 with preconnectorized abonent cable in the Rapid Box carton.

2. General information.

In the Rapid Box kit we have the following elements:

| | |
|---|---|
|  | <p>Cardboard Rapid Box.</p> |
|  | <p>Screws kit, fastening pins, mounting base.</p> |
|  | <p>Customer outlet VFTO-E1 with preconnectorized cable.</p> |

Title:

Installing instruction customer outlet VFTO-E1 with preconnectorized abonent cable in the Rapid Box carton.



Cardboard box with the wound up cable VC-D40.

3. Installation guidelines



Open the front part of cardboard box as shown in the picture.

Title:

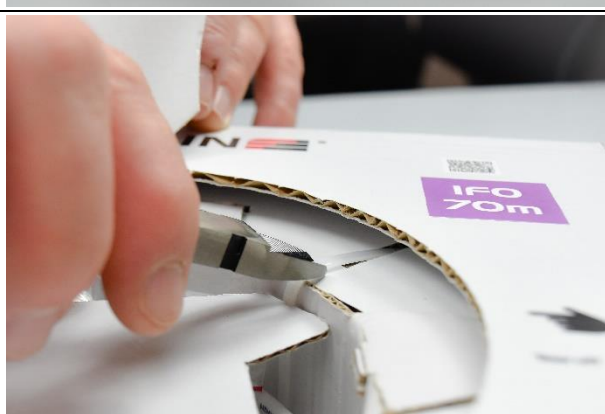
Installing instruction customer outlet VFTO-E1 with preconnectorized abonent cable in the Rapid Box carton.



Open the cover cardboard box which protects customer outlet VFTO-E1.

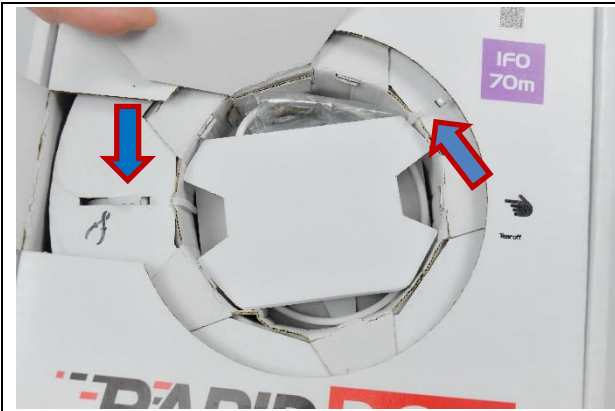


We put out mounting base kit for customer outlet VFTO-E1



Cut the cable tie which fixes cardboard drum to the box.

Title:
Installing instruction customer outlet VFTO-E1 with preconnectorized abonent cable in the Rapid Box carton.



Places where we cut cable ties.



Next close the cover of cardboard drum and box.

Title:

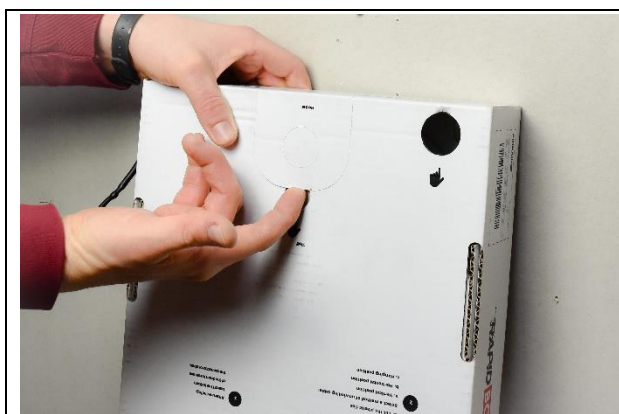
Installing instruction customer outlet VFTO-E1 with preconnectorized abonent cable in the Rapid Box carton.

4. Methods of unwinding cable from Rapid Box.



Before unwinding cable, we need to put out the end of a cable from the box.

a) the unwind with the use of a wall bracket



Deflect the wall bracket witch is back side of box.

Title:

Installing instruction customer outlet VFTO-E1 with preconnectorized abonent cable in the Rapid Box carton.



Push the plug and hang the Rapid Box.



Expand the cable.

b) the unwind with the use of Rapid Box cover



Put the cardboard Rapid Box, as shown in the picture and open the cover.

Title:

Installing instruction customer outlet VFTO-E1 with preconnectorized abonent cable in the Rapid Box carton.



Support cover and expand the cable.

c) the unwind through a hole;

Push out the plugs which are placed on both sides of the box.

Title:

Installing instruction customer outlet VFTO-E1 with preconnectorized abonent cable in the Rapid Box carton.



Put a fixing element, for example a cable tie, through a hole.

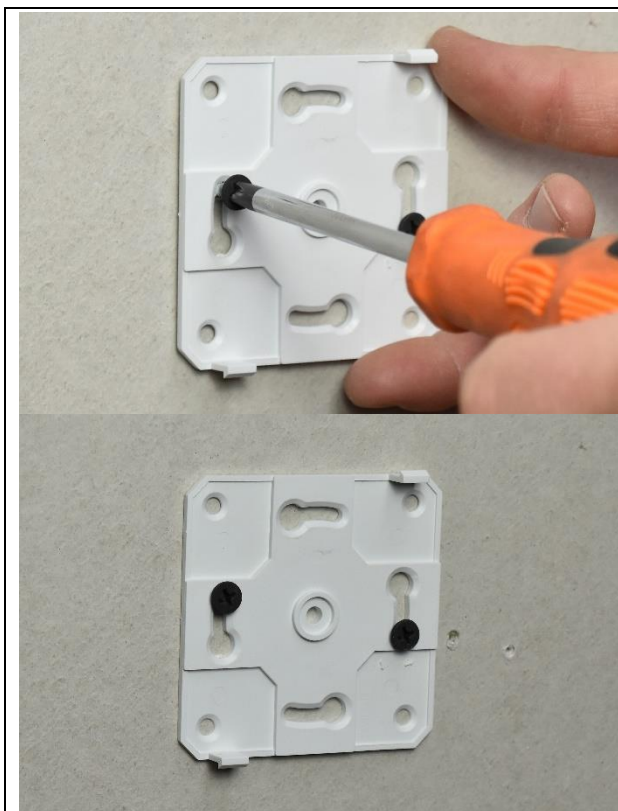


Catch a fixing element with one hand, and unwind the cable with the second hand.

Title:

Installing instruction customer outlet VFTO-E1 with preconnectorized abonent cable in the Rapid Box carton.

5. Installing customer outlet VFTO-E1.

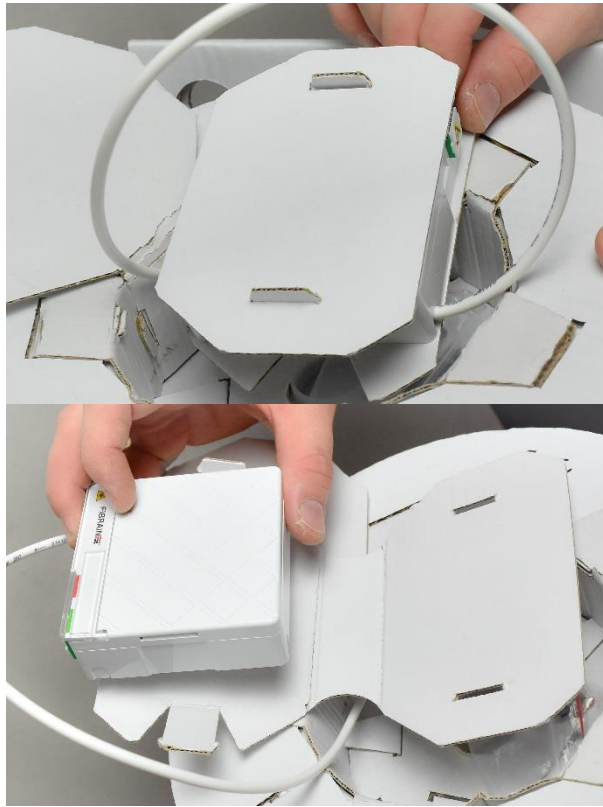


Fix the mounting base of the customer outlet VFTO-E1 with the use of attached screws.

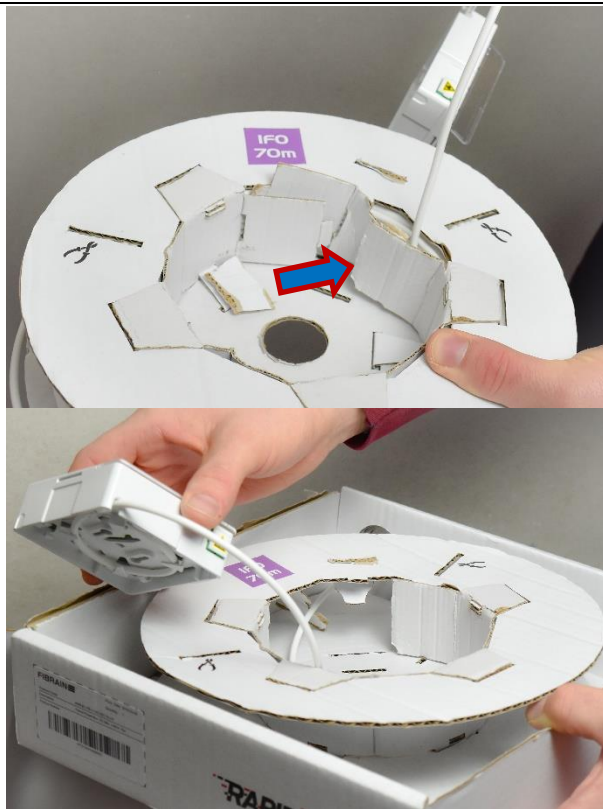


Open the cover of the cardboard box and drum.

Title: Installing instruction customer outlet VFTO-E1 with preconnectorized abonent cable in the Rapid Box carton.



Take out customer outlet with the drum and take off a cardboard insert.



As shown in the picture, tear the cardboard to separate customer outlet from the drum.

Title:

Installing instruction customer outlet VFTO-E1 with preconnectorized abonent cable in the Rapid Box carton.



Tear the Rapid Box in the place shown in the photo to separate customer outlet with the cable.



Mount customer outlet to the base which was installed earlier.

